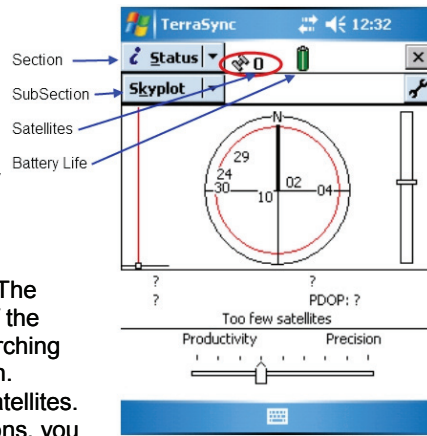


TerraSync Quick Guide

This card contains information about the TerraSync software only, information about the handheld computer can be found on the GeoExplorer Quick Start Card.

Getting Started

- Turn on the GeoExplorer unit. **Always use the stylus provided.** Tap Start and then tap TerraSync from the list.
- Make note of the layout of the screen. TerraSync is made up of Sections and each Section has SubSections which display different information.

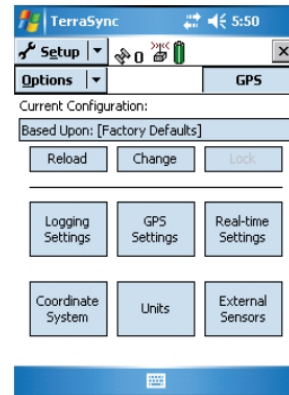


Connecting to Satellites

- Go to section: **Status**, subsection: **Skyplot**. The number of satellites is displayed at the top of the screen. The unit will automatically begin searching for satellites. You will need at least 4 to begin.
- It may take up to 10 minutes to connect to satellites. If you are in an area with many tall obstructions, you may need an additional antenna.

Configuring Coordinate System and Units

- Tap the Section list and pick **Setup**. Tap **Coordinate System** button.
- On the Coordinate System screen, review and change each option to match the parameters of your project. Once complete, tap **OK**.
- Tap the **Units** button. Review and change each option accordingly.

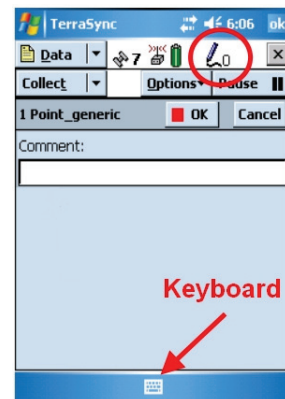


Setting Up a New File

- Tap the Section list and pick **Data**. Tap the SubSection list and pick **New File**.
- Use the integrated keyboard to name your file and change the options as needed. Once complete, tap **Create**.
- Confirm/modify the antenna height (the height at which you'll be holding the unit). Tap **OK**.

Collecting Features

- On the next screen, choose a feature and press **Create**. Examples: a point could be a well, a line could be a fence, an area could be a parking lot.
- TerraSync will now begin logging the feature.
- Use the keyboard to give this feature a unique comment.
- Pay attention to the pen icon, top-right. This indicates the number of data points collected. For best accuracy, make sure this number is above 30. Hold the unit steady and begin walking slowly along your line or area. For a point, simply hold the unit above the point.
- Once complete, tap **OK** to save this feature and move on to the next feature.

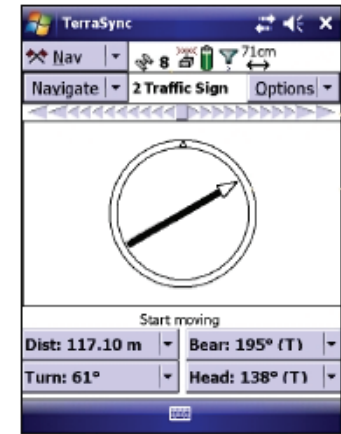


US Environmental Rental Corporation
Rentals · Sales · Service
(888) 550 - 8100

Navigating to a Target Feature

When you have a data file loaded onto TerraSync and you need to find the features in that data file.

- Open TerraSync. Go to Section: **Data**. Go to SubSection: **Existing File**. Choose your file from the list and tap **Open**. Confirm antenna height.
- Tap the feature that you'd like to find from the list.
- Tap the Options button. A menu will pop up.
- Select **Set Nav Target** and then pick the highlighted feature.
- Go to Section: **Navigation**. This screen (as shown) will display all of the information and direction needed to navigate to your selected feature.
- You can also go to Section: **Map** to see your current location and the location of your target feature.

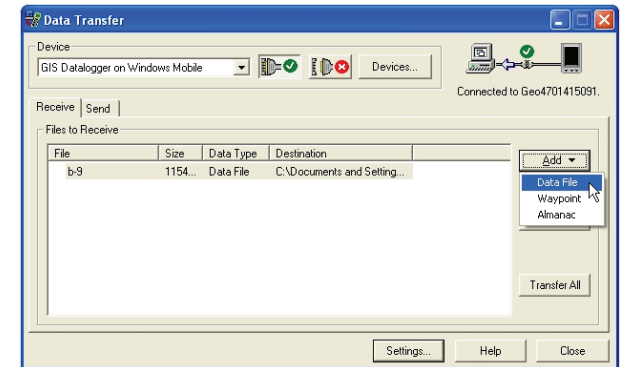


Connecting to PC

- You will need to have Pathfinder Office and Microsoft ActiveSync installed on your PC before following these steps. Both of these software are on the CDs provided with a rental.
- Place the handheld unit securely into the cradle.
- Connect the USB cable from the cradle to your PC.
- Microsoft ActiveSync will recognize the connection and begin syncing.
- Follow the steps on the Synchronization Wizard until connection is complete.
- We recommend that you **do not** sync any personal files or folders with the handheld unit.

Transferring Data

- Open Pathfinder Office.
- Using the menus in the top-left corner, go to **Utilities > Data Transfer...**
- The Data Transfer screen will pop up.
- Look at the connection setting on the top-right. Make sure that you are connected.
- Depending on what you'd like to do, click on either the **Receive** tab or the **Send** tab.
- Click the **Add** button and pick the type of file you'd like to transfer (as shown).
- Choose the files you'd like to transfer from the list.
- Once you've chosen all of the files to be transferred, click the **Transfer All** button.



US Environmental Rental Corporation
Rentals · Sales · Service
(888) 550 - 8100