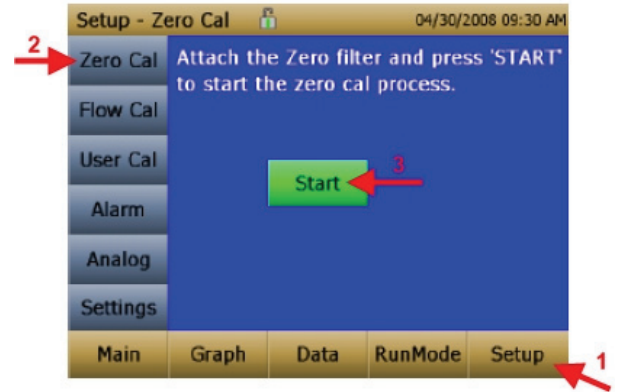


# TSI DustTrak II 8530 Quick Reference Guide



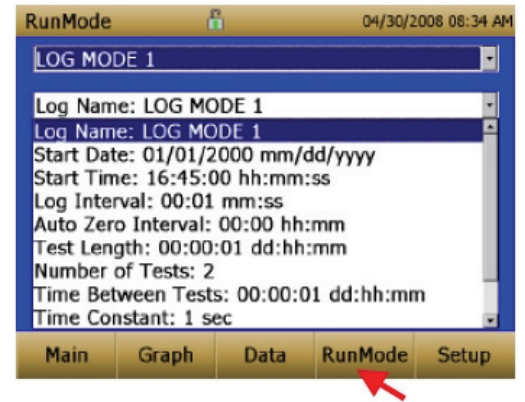
## Zero Calibration

- Press the **Setup** button.
- Attach zero filter
- Press the **Zero Cal** button.
- Press the **Start** button. A count-down will begin.
- When the screen indicates “Zero Cal Complete”, the unit is now calibrated and ready to use.



## Setting up a Test

- Press the RunMode button.
- Choose any of the TEST 1 through 5 options. A menu will appear.
- Click on each menu item and modify and **Save** as necessary.
- Once complete, press Main to begin your programmed test.



<b>Log Name</b>	Log Name, brings up a virtual keypad to name the Logged Data file.
<b>Start Date</b>	Start Date, select the date the test will start.
<b>Start Time</b>	Start Time, select the time the test will start.
<b>Log Interval</b>	The log interval can be set from 1 second to 60 minutes. It is the amount of time between logged data points.
<b>Auto Zero Interval</b>	Interval between re-zeroing the instrument using the Auto-Zero accessory. Models 8530 and 8531 desktop only.
<b>Test Length</b>	From 1 minute to the limit of the data storage.
<b>Number of Tests</b>	Number of tests, 1 to 999.

<b>Time between Tests</b>	Time between tests, 1 minute to 30 days.
<b>Time Constant</b>	Time Constant can be set from 1 to 60 seconds. This will control the update rate of the main screen. It is the rolling average of data displayed on the main screen and is not linked to logged data in either Manual or Program Log modes.
<b>Use Start Date</b>	Use Start Date, option to use programmed start date or by pass programmed start date.
<b>Use Start Time</b>	Use Start Time, option to use programmed start time or bypass programmed start time.

## Downloading Tests

- Make sure your programmed test has stopped. Press the **Stop** button if necessary.
- Press the **Data** button.
- Insert a USB Flash Drive into the USB port on the left side of the unit (as shown)
- Press the **Save All** button. The tests will be converted to the .csv format and download to the USB device.
- The data can also be downloaded by installing the TrakPro 4.2.2 software onto a PC, connecting the DustTrak to the PC via USB cable, and transferring the data into the TRAKPRO software. Instructions for the TRAKPRO software can be found in the “Help” file in the TRAKPRO software.

